

LUME  STUDIOS

Who We Are

LUME studios is an immersive venue and experiential creative studio at the intersection of **art & technology**

Serving some of the biggest brands in the world, we work hand in hand with our clients to activate unparalleled **immersive experiences**



Our Spaces

IMMERSIVE Studio

Our premiere space. Developed with cutting edge immersive technology, this studio transforms to achieve any activation or event.

- Immersive Projection System
- 17-Speaker JBL Spatial Soundsystem
- Customizable Astera Spotlighting
- 2,400 sq ft Street-level White Box
- 16 ft Ceilings
- 20 ft Retail Facade w/ Customizable Marquee
- Modular Walls
- 150-person Capacity

= \$11,500 minimum





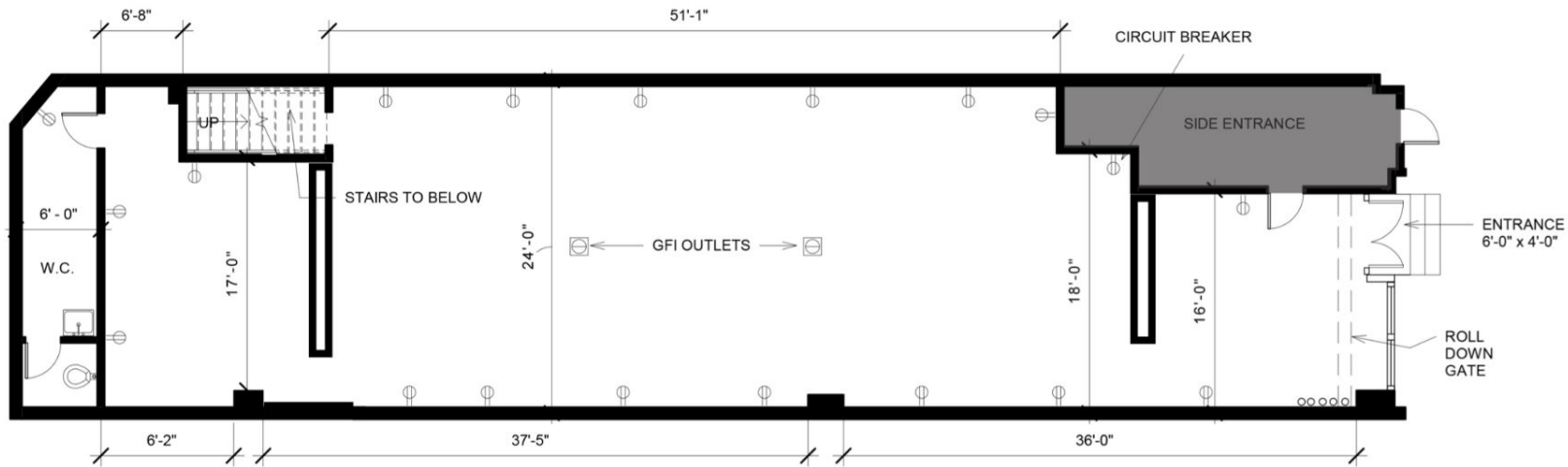


BLACKOUT Studio

Our digital playground.

Featuring fully customizable monitor walls and interactive displays, this space works in tandem with the Immersive Studio to create a multi-level event experience.

- 19 Customizable HD Monitors
- LED Wall
- 1,000 sq ft Basement Level
- Accessible from Immersive Studio
- 50-person Capacity

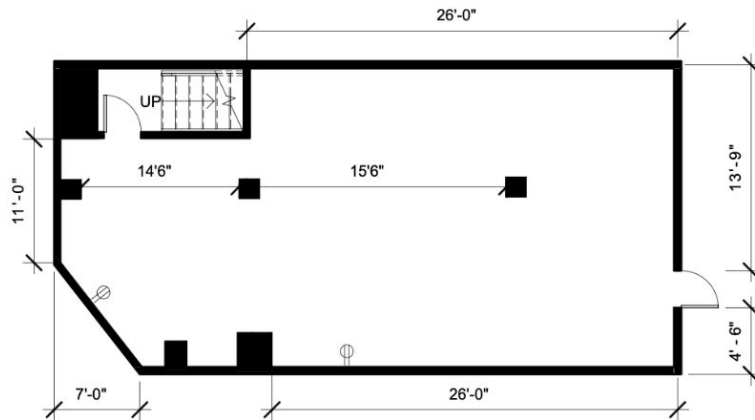


NOTES:

- 2400 SQ FT
- 16FT CEILINGS
- GALLERY FINISH
- 20 FT RETAIL FACADE
- 1 RESTROOM
- 19 OUTLETS FL.
- 16 CEILING OUTLETS
- 100 AMPS FOR CLIENT
- USE INCL. FIRST FL
- AND B.O.H.

○ OUTLET

1 FIRST FLOOR
1/8" = 1'-0"



NOTES:
1000 SQ. FT
14 FT. CEILINGS
BACK OF HOUSE
STORAGE AND EQUIP

1 BASEMENT PLAN
1/8" = 1'-0"

THE LOFTS

Our upper floors house airy lofts with refined downtown aesthetic. The Lofts are ideal spaces to elevate any event including art exhibitions, social gatherings, VIP/press events, or dinner experiences.

- 4 Lofts (2-5 Fl)
- ≈ 2000 sq-ft per loft
- HD Projection
- Customizable Spotlights
- Kitchenettes
- Elevator & Staircase Access
- 13-16 ft Ceilings
- 50-100 person Capacity







ESPOLÓN
TEQUILA



CALAVERA COLLECTION
The Afterparty Edition

ESPOLÓN
TEQUILA

ESPOLÓN
TEQUILA



BORDADO EN VIVO

Launch
Event



Brand
Activation



amazon influencers

CELEBRATING
ASIAN PACIFIC
AMERICAN
HERITAGE MONTH

amazon influencers

Press &
Media

CHASE | AEROPLAN

Corporate

Retail



Fashion

LUME Studios is a venue as well as a full service experiential creative and production company

Ideation, Strategy, & Production

Whether you are an agency or brand we can be a resource for all elements of event production from design through execution.

Immersive Content Development

Our creative team develops sensory content that truly immerses audiences. From custom animations, to interactive projections, to spatial sound design we create transformative digital experiences.

Experience Amplification

Having your experience reach beyond the room is key to maximizing its influence, so we have an in-house team of content creators at your disposal.

Our Services

Lume Studios offers an end to end solution for experiential. Our spaces and services work in synergy to develop unique experiences that have lasting effect with audiences.

Venue

- Immersive Studio
- Blackout Studio
- The Lofts
- Partner Venues

Production

- Art Direction
- Lighting Design
- Fabrication
- Vendor Management

Concept

- Strategy & Ideation
- Experiential Creative
- Experience Design

Immersive Content

- Graphic Design
- Custom Projection Design & Mapping
- Animation & Interactive Content
- Sound Design
- Immersive Installations

Influencers

Content Capture

Socials

Livestream

Get In Touch

393 Broadway, New York, NY 10013



Thank You!