

# THE ROOFTOPS AT ROCKEFELLER CENTER



# 620 Loft & Garden

620 FIFTH AVENUE - 7TH FLOOR

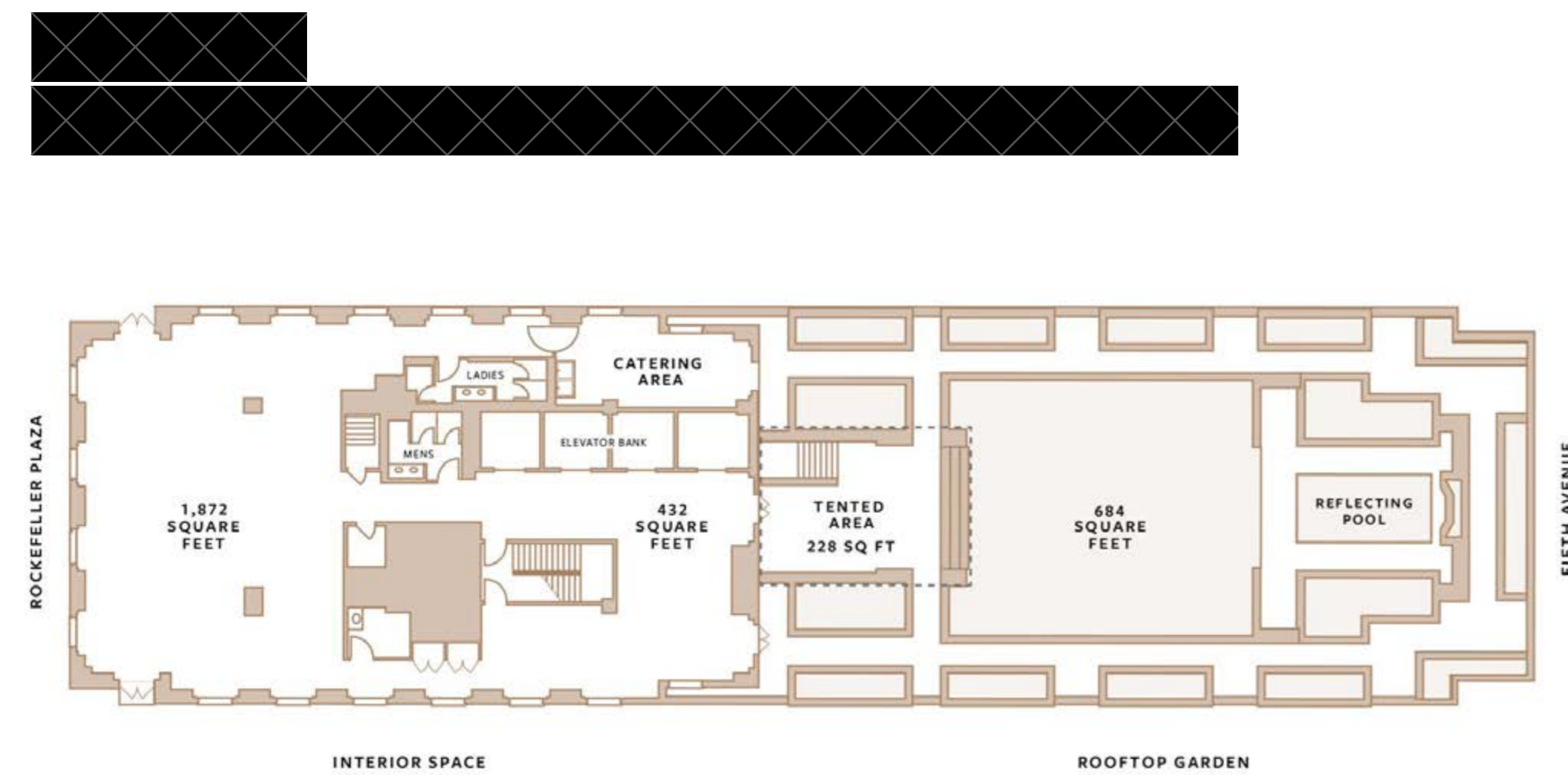
Sitting atop Fifth Avenue, 620 Loft & Garden is a hidden gem offering dramatic cityscapes, overlooking St. Patrick's Cathedral. The space features a historic manicured garden, reflective pool and newly renovated interior loft. Events are welcomed year-round as a portion of the rooftop garden is tented. The space highlights one-of-a-kind views from the Prometheus statue and Radio City Marquee to the iconic Rockefeller Center Christmas Tree and Saks light show during the holiday season.

## Capacity

- 165 Standing Reception
- 120 Seated in Loft
- 75 Seated in Garden
- 3,300 SF
- 13ft 10in Ceiling height

## Amenities

- Food & Beverage, décor and furniture arranged through preferred vendors
- In-house sound system
- Complimentary Wi-Fi
- Tented patio



# 610 Loft & Garden

610 FIFTH AVENUE - 7TH FLOOR

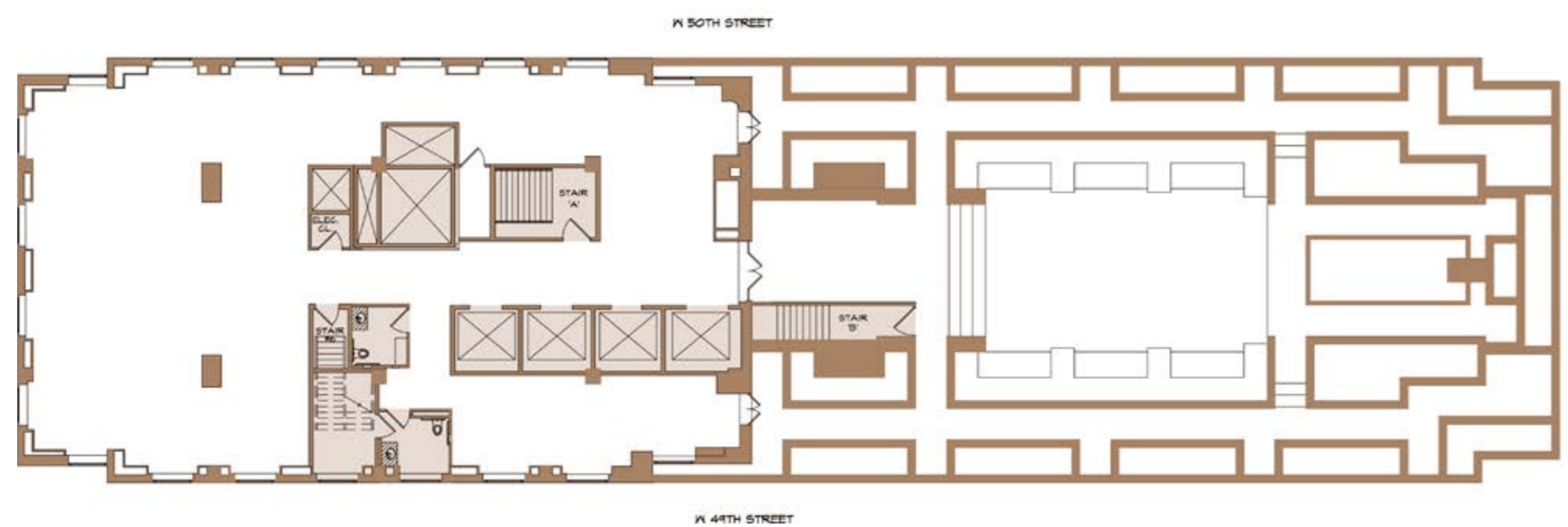
The 610 Loft & Garden is the 7th floor penthouse of 610 Fifth Avenue, better known as La Maison Francaise, on the corner of Fifth Avenue and 49th Street. This brand new space is the sister property to 620 Loft & Garden, with a mirrored rooftop garden oasis. The interior loft overlooks Rockefeller Plaza and is brightened by wall to wall windows that fill the space with natural light, perfect for daytime events. This space is ideal for breakfast and luncheon events, as well as intimate evening receptions.

## Capacity

- 150 Standing Reception
- 120 Seated Inside
- 72 Seated Outside
- 3,300 SF
- 13ft 10in Ceiling height

## Amenities

- Food & Beverage
- Décor and furniture arranged through preferred vendors
- In-house sound system



# Radio Park

50 ROCKEFELLER PLAZA, 9TH FLOOR

Radio Park is our newest Rockefeller Center rooftop venue located on the 9th floor of 50 Rockefeller Plaza. This space features a half-acre garden that sits atop Radio City Music Hall. The space can accommodate up to 300 guests for cocktails or 175 for a seated meal in our interior space. Lounge and outdoor furniture are included in your venue rental.

## Capacity

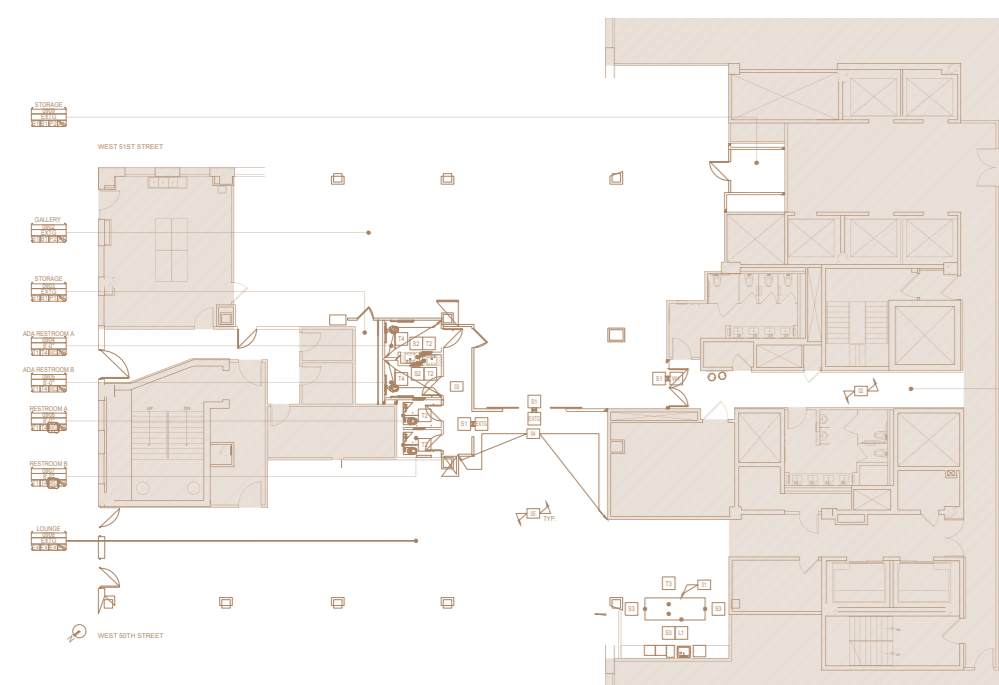
- 300 Standing Reception
- 175 Seated Reception
- Half Acre Garden
- 4,650 SF Interior

## Amenities

- Food & Beverage and décor and furniture arranged through preferred vendors
- Complimentary Wi-Fi
- In-house furniture



Interior



Exterior

